

ST. ANDREWS BUILDING 509 E. TWIGGS STREET

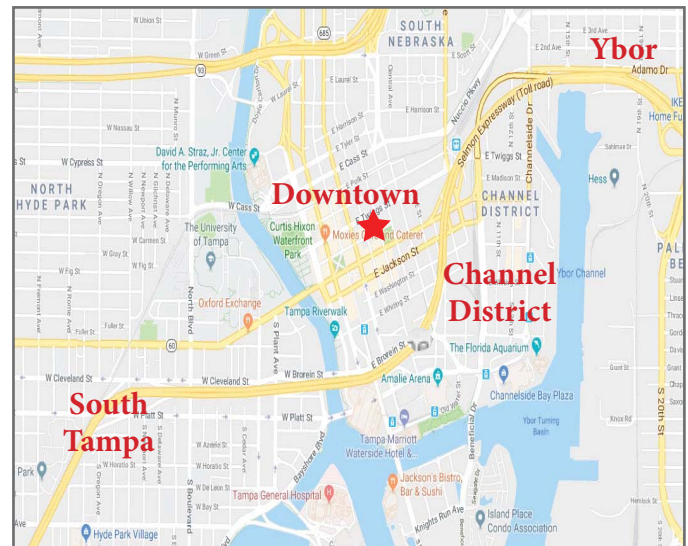
TAMPA, FL 33602

Contemporary Office Space For Lease



Space Details:

- 5,100 SF of Contemporary Office Space on the 6th Floor
- Lease Rate: \$19.00 PSF Full Service
- Open space with two large offices
- Private restrooms
- 24/7 access
- Located in Downtown
- Blocks from the Riverwalk, Convention Center, Florida Aquarium and Transit
- Immediate access to I-275, I-4 and the Selmon Crosstown Expressway



FOR MORE INFORMATION, CONTACT:

ABBEY DOHRING AHERN
Principal, Brokerage
Main (813) 223-9111
Abbey@DohringGroup.com



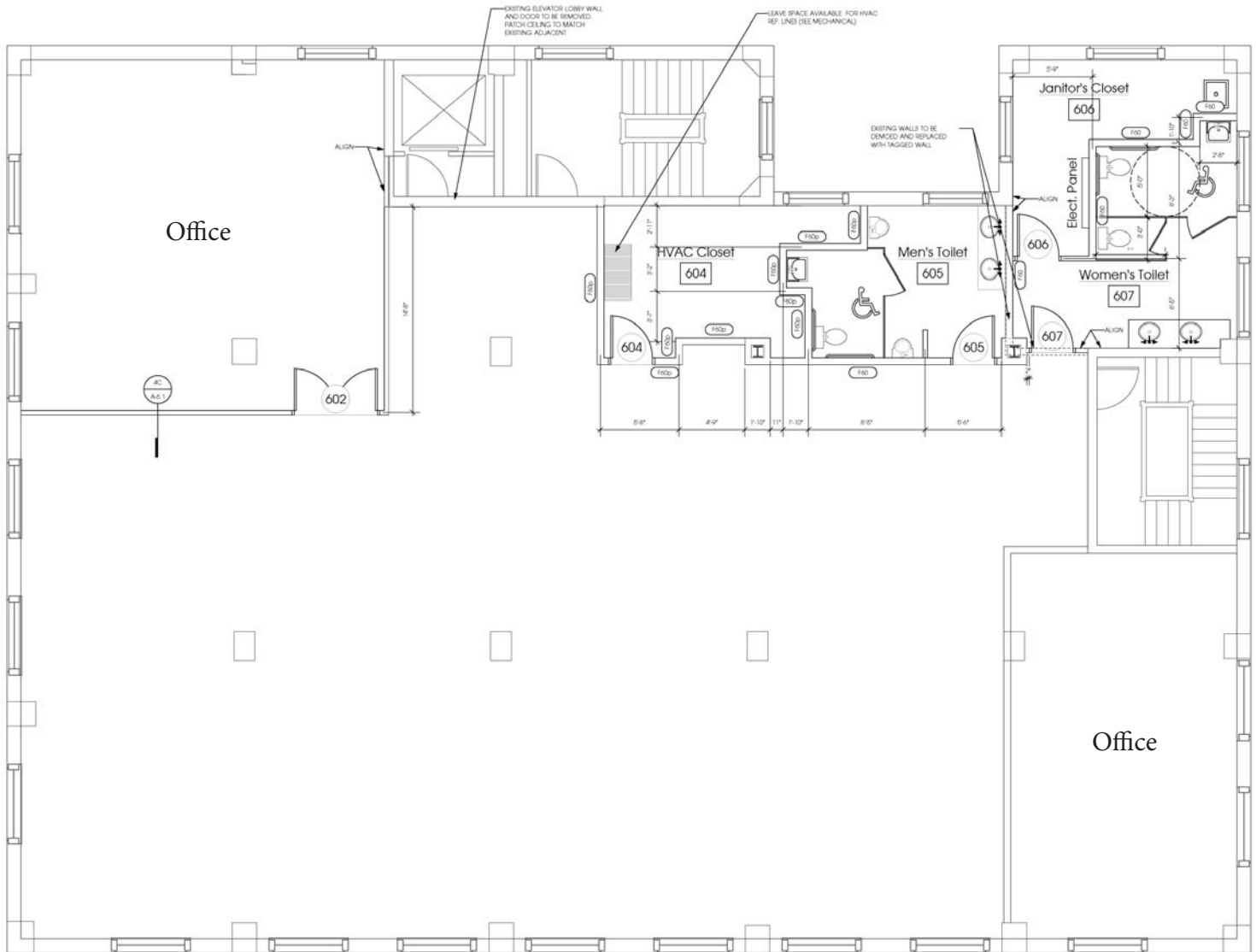
THE DOHRING GROUP
518 North Tampa Street, Suite 300
Tampa, Florida 33602
www.DohringGroup.com

ST. ANDREWS BUILDING 509 E. TWIGGS STREET

TAMPA, FL 33602

Contemporary Office Space For Lease

Floor Plan



THE DOHRING GROUP
518 North Tampa Street, Suite 300
Tampa, Florida 33602
www.DohringGroup.com

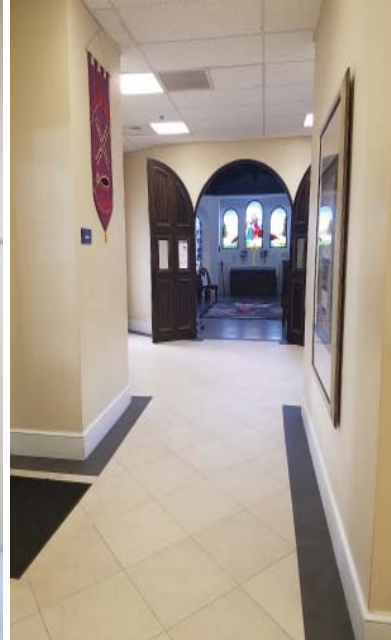
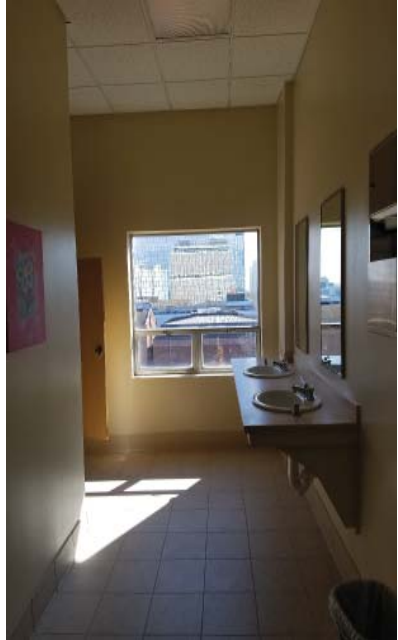
FOR MORE INFORMATION, CONTACT:

ABBEY DOHRING AHERN
Principal, Brokerage
Main (813) 223-9111
Abbey@DohringGroup.com

ST. ANDREWS BUILDING 509 E. TWIGGS STREET

TAMPA, FL 33602

Office Space For Lease



THE DOHRING GROUP
518 North Tampa Street, Suite 300
Tampa, Florida 33602
www.DohringGroup.com

FOR MORE INFORMATION, CONTACT:

ABBIE DOHRING AHERN
Principal, Brokerage
Main (813) 223-9111
Abbey@DohringGroup.com