

518 N. TAMPA ST.

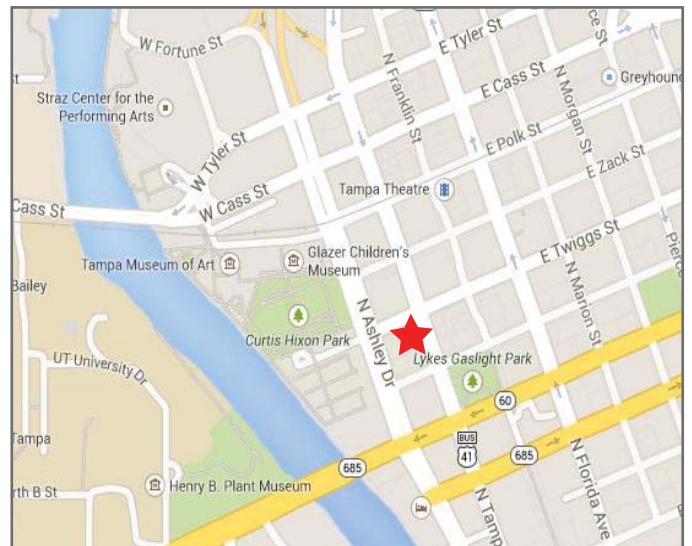
TAMPA, FL 33602

Executive Suites For Lease



BUILDING DETAILS

- Executive Suites are move-in ready
- Ranging from \$500 - \$950/Month
- One page lease with flexible lease terms
- On-site management and convenient parking
- Shared conference and break room
- Central downtown location
- Adjacent to Curtis Hixon Park and Restaurant Row
- Ride an electric shuttle or the streetcar to work
- Furniture available
- Immediate access to the I-275, I-4 and the Selmon Crosstown Expressway



THE DOHRING GROUP
518 North Tampa Street, Suite 300
Tampa, Florida 33602
www.DohringGroup.com

FOR MORE INFORMATION, CONTACT:

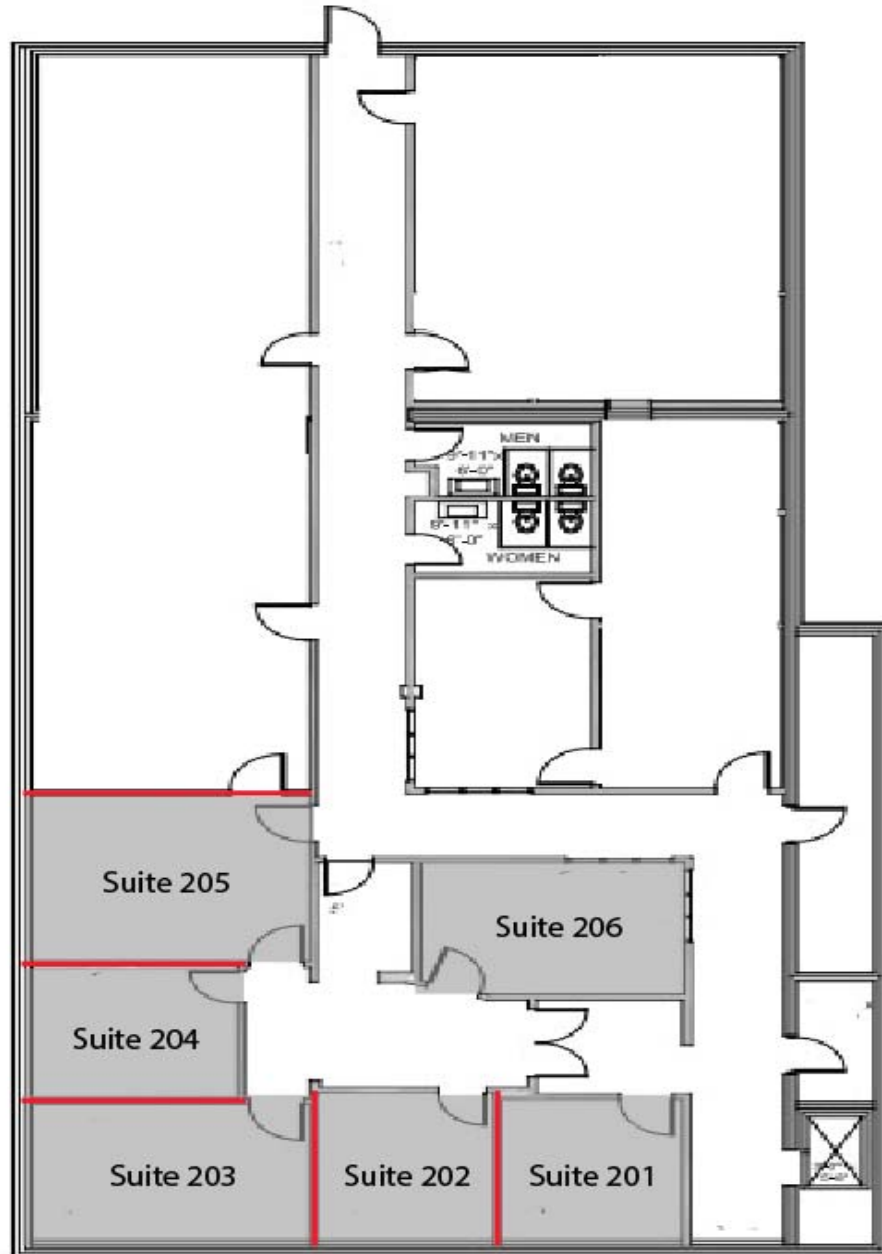
ABBEY DOHRING AHERN
Principal, Brokerage
Main (813) 223-9111
Abbey@DohringGroup.com

518 N. TAMPA ST.

TAMPA, FL 33602

Executive Suites For Lease

Floor Plate



THE DOHRING GROUP
518 North Tampa Street, Suite 300
Tampa, Florida 33602
www.DohringGroup.com

FOR MORE INFORMATION, CONTACT:

ABBEY DOHRING AHERN
Principal, Brokerage
Main (813) 223-9111
Abbey@DohringGroup.com

518 N. TAMPA ST.

TAMPA, FL 33602

Executive Suites For Lease



THE DOHRING GROUP
518 North Tampa Street, Suite 300
Tampa, Florida 33602
www.DohringGroup.com

FOR MORE INFORMATION, CONTACT:

ABBIE DOHRING AHERN
Principal, Brokerage
Main (813) 223-9111
Abbey@DohringGroup.com