

518 N. TAMPA ST.

TAMPA, FL 33602

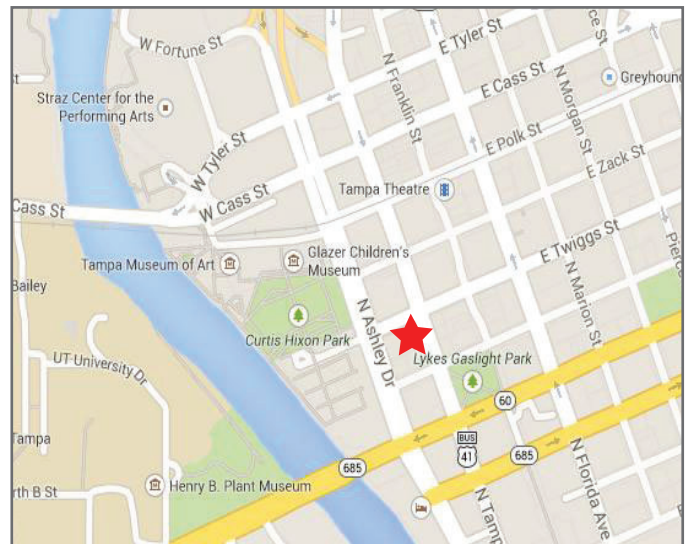
Individual Suites For Lease



[CLICK HERE for Automated Video Tour](#)

BUILDING DETAILS

- Individual Suites are move-in ready
- Ranging from \$500 - \$1,100/Month
- One page lease with flexible lease terms
- On-site management and convenient parking
- Shared conference and break room
- Central downtown location
- Adjacent to Curtis Hixon Park and Restaurant Row
- Ride an electric shuttle or the streetcar to work
- Furniture available
- Immediate access to the I-275, I-4 and the Selmon Crosstown Expressway



FOR MORE INFORMATION, CONTACT:

ABBEY DOHRING AHERN
Principal, Brokerage
Main (813) 223-9111
Abbey@DohringGroup.com



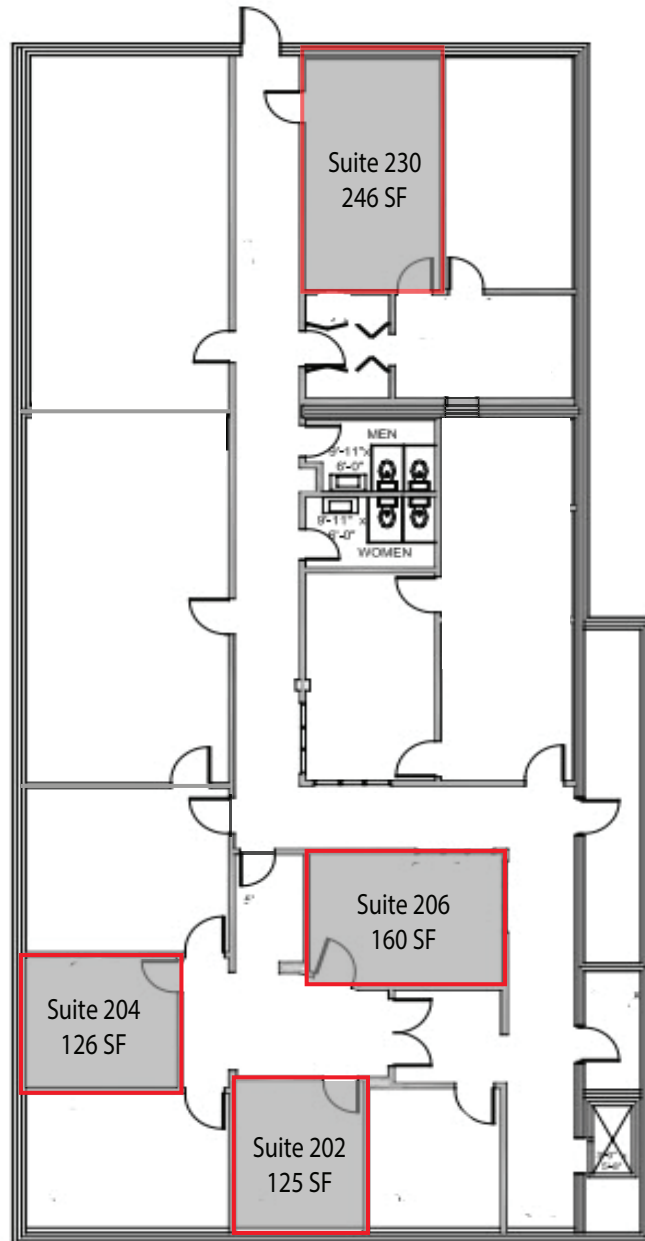
THE DOHRING GROUP
518 North Tampa Street, Suite 300
Tampa, Florida 33602
www.DohringGroup.com

518 N. TAMPA ST.

TAMPA, FL 33602

Individual Suites For Lease

2nd Floor



**Click Suite to
View Video Tour*



THE DOHRING GROUP
518 North Tampa Street, Suite 300
Tampa, Florida 33602
www.DohringGroup.com

FOR MORE INFORMATION, CONTACT:

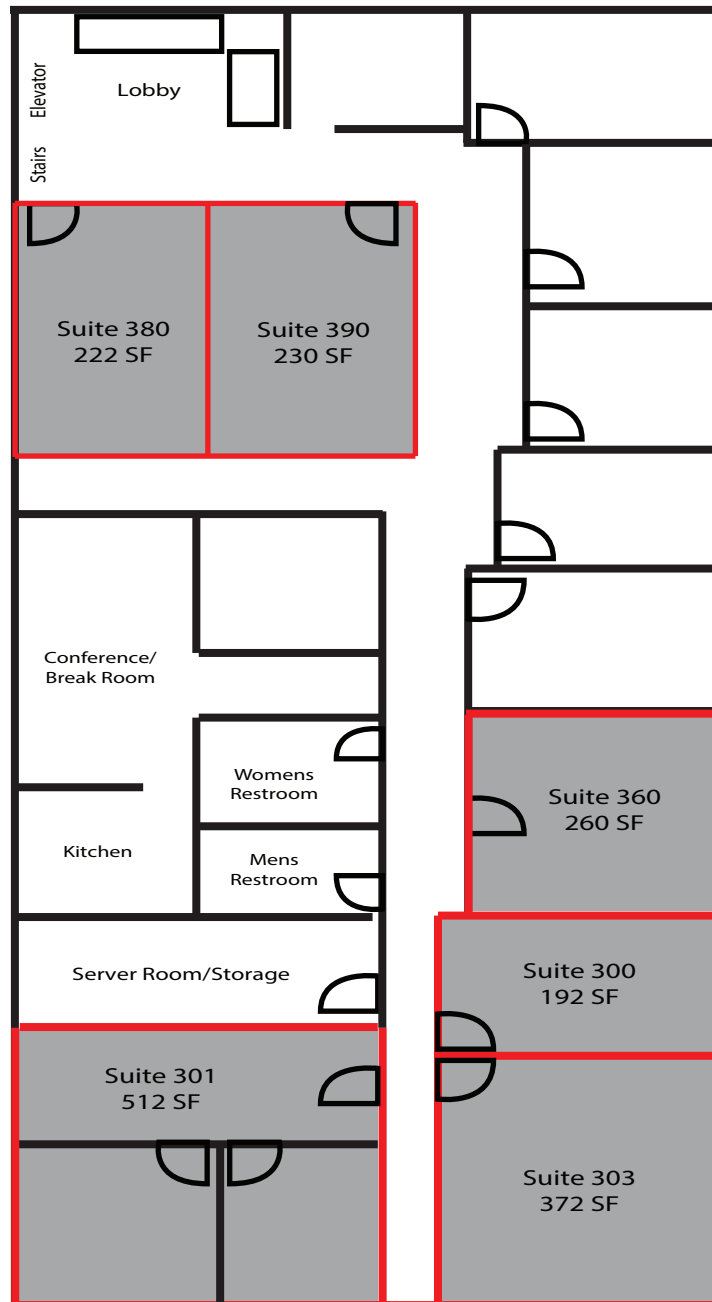
ABBEY DOHRING AHERN
Principal, Brokerage
Main (813) 223-9111
Abbey@DohringGroup.com

518 N. TAMPA ST.

TAMPA, FL 33602

Individual Suites For Lease

3rd Floor



**Click Suite to
View Video Tour*



THE DOHRING GROUP
518 North Tampa Street, Suite 300
Tampa, Florida 33602
www.DohringGroup.com

FOR MORE INFORMATION, CONTACT:

ABBEY DOHRING AHERN
Principal, Brokerage
Main (813) 223-9111
Abbey@DohringGroup.com

518 N. TAMPA ST.

TAMPA, FL 33602

Individual Suites For Lease

Conference Room



Suite 202



Suite 204



Suite 206



THE DOHRING GROUP
518 North Tampa Street, Suite 300
Tampa, Florida 33602
www.DohringGroup.com

FOR MORE INFORMATION, CONTACT:

ABBEY DOHRING AHERN
Principal, Brokerage
Main (813) 223-9111
Abbey@DohringGroup.com

518 N. TAMPA ST.

TAMPA, FL 33602

Individual Suites For Lease

3rd Floor Lobby



Suite 300



Suite 301 (first office)



Suite 301 (second office)



THE DOHRING GROUP
518 North Tampa Street, Suite 300
Tampa, Florida 33602
www.DohringGroup.com

FOR MORE INFORMATION, CONTACT:

ABBEY DOHRING AHERN
Principal, Brokerage
Main (813) 223-9111
Abbey@DohringGroup.com